

DH400 (A378)

PARTS CATALOG

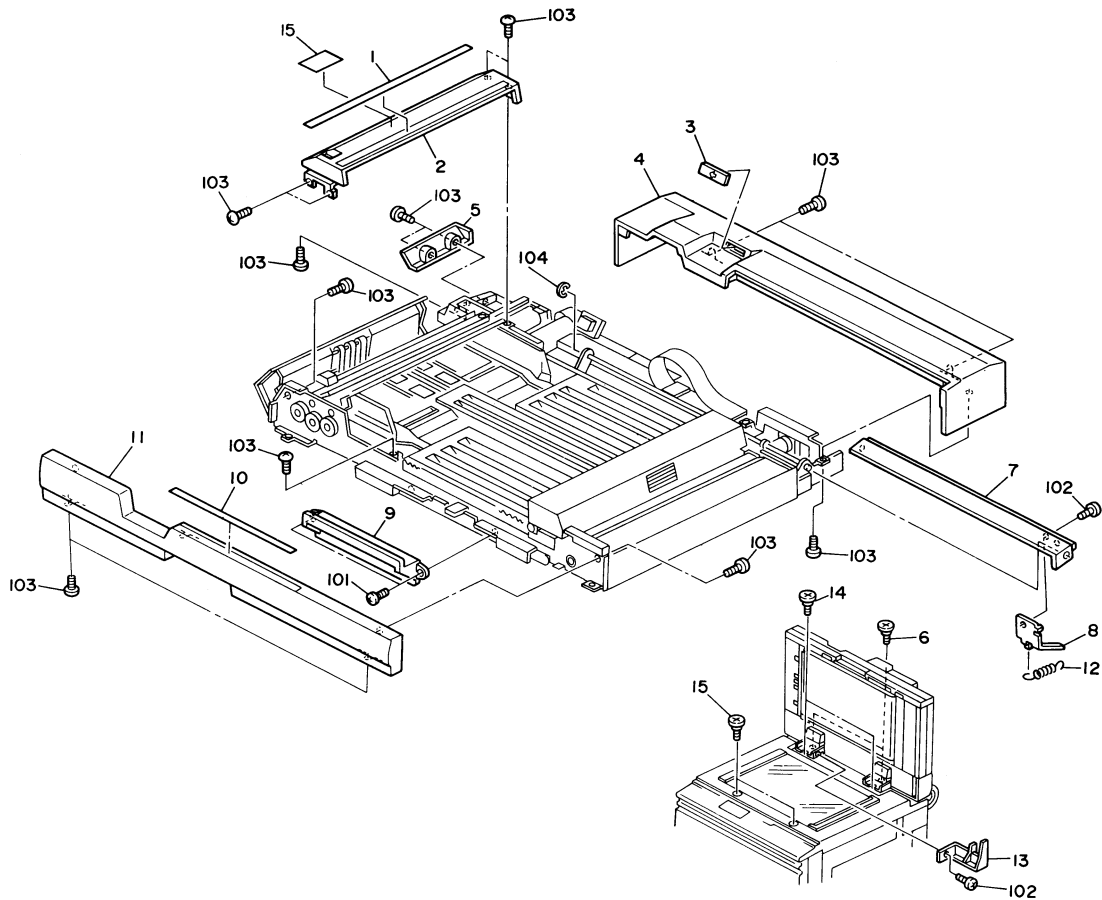
INTRODUCTION

This chapter instructs you the numbers and names of this parts on this machine.

INDEX to PARTS CATALOG

1. Exterior (A378)	2
2. Feed-in SECTION (A378)	4
3. Separation Section (A378)	6
4. Feed-out Section (A378)	8
5. Transport Section (A378)	10
6. Invertor Section (A378)	12
7. Exit Section 1(A378)	14
8. Exit Section 2(A378)	16
9. Original Table (A378)	18
10. Frame Section (A378)	20
11. Electrical Section (A378)	22
12. Decal and Document (A378)....	24
Parts Index	27

1. EXTERIOR (A378)

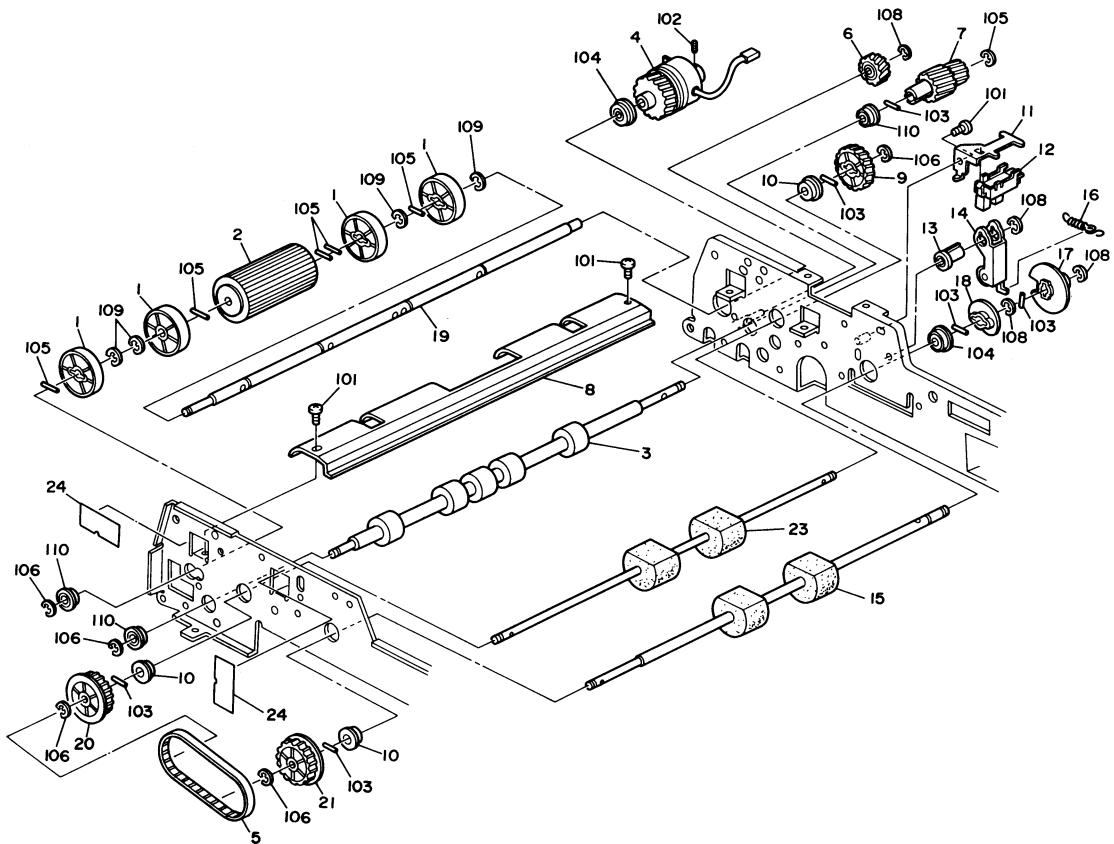


1. EXTERIOR (A378)

Index No.	Part No.	Description	Q'ty Per Assembly
1	A499 6012	Decal - Side Fence - LT	1
1	A499 6013	Decal - Side Fence - A4	1
2	A499 3561	Right Upper Cover	1
3	A499 3531	Indication Panel	1
4	A378 3511	Rear Cover	1
5	A378 3516	Lower Rear Cover	1
6	A378 4112	Sholder Screw M5	2
7	A378 3591	Slide Support Cover	1
8	A378 3148	Switch Actuator	1
9	A499 3621	Grip - Magnet Catch	1
10	A378 6016	Decal - Exit	1
11	A378 3541	Front Cover	1
12	A378 3593	Spring	1
13	A378 4116	Switch Actuator	1
14	A378 4111	Sholder Screw - M5	2
15	A378 4114	Sholder Screw - M4	2

Index No.	Part No.	Description	Q'ty Per Assembly
101	0314 0060W	Philips Pan Head Screw - M4x6	
102	0314 0080M	Philips Pan Head Screw - M4x8	
103	0354 0060D	Sunk Screw - 4x6	
104	0720 0040E	Retaining Ring - M4	

2. FEED-IN SECTION (A378)

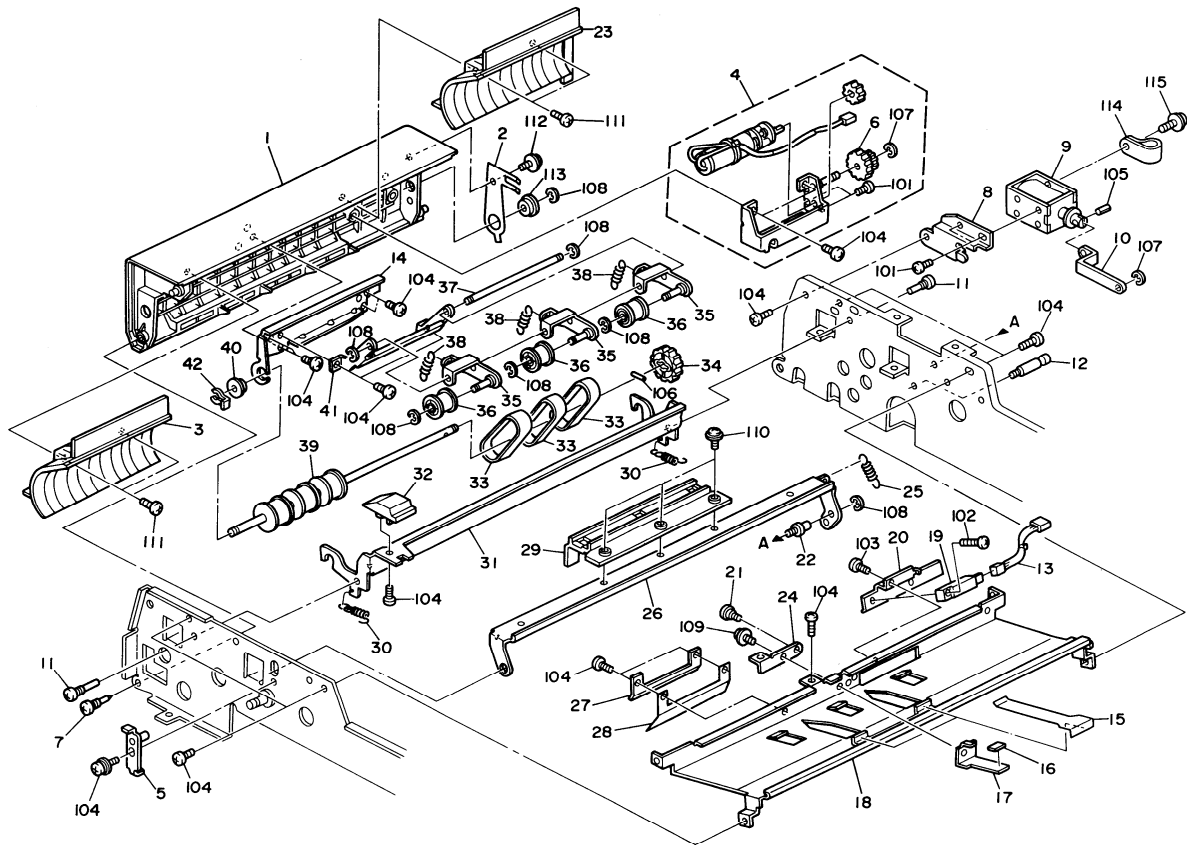


2. FEED-IN SECTION (A378)

Index No.	Part No.	Description	Qty Per Assembly
1	A499 1212	Guide Roller	4
2	A378 1211	Separation Roller	1
3	AF02 0161	Feed-out Roller	1
4	A378 1221	Separation Clutch	1
5	A378 1084	Timing Belt - 192XL	1
6	AB01 1086	Gear - 20Z	1
7	A378 1094	Gear - 19Z/22Z	1
8	A499 1224	Inner Separation Guide	1
9	A378 1091	Gear - 32Z	1
10	A422 1078	Bushing - 6x12x4mm	11
11	A378 1467	Sensor Bracket	1
12	5216 5245	Photointerruptor - IL-G-3P-S3T2-E	3
13	A499 1465	Bushing - 5m	1
14	A499 1461	Cam Lever	1
15	AF02 3002	1st Pick-up Roller	1
16	AA06 0279	Pressure Spring	1
17	5936 1145	Position Encoder	1
18	A499 1458	Pick-up Roller Cam	1
19	A499 1215	Separation Drive Shaft	1
20	A378 1096	Pulley - 24Z	2
21	A378 1095	Pulley -18Z	3
23	AF02 3003	2nd Pick-up Roller	1
24	A378 3133	s e a l	4

Index No.	Part No.	Description	Qty Per Assembly
101	0314 0060W	Philips Pan Head Screw - M4x6	
102	0574 0040E	Hexagon Headless Set Screw - M4x4	
103	0632 0100E	Pin - M2x10	
104	0805 3291	Ball Bearing - 8x16x5mm	
105	0632 0140E	Parallel Pin - M2x14	
106	0720 0040E	Retaining Ring - M4	
108	0720 0060E	Retaining Ring - M6	
109	0720 0070E	Retaining Ring - M7	
110	0741 3506	Bail Bearing - 6x12x4 mm	

3. SEPARATION SECTION (A378)

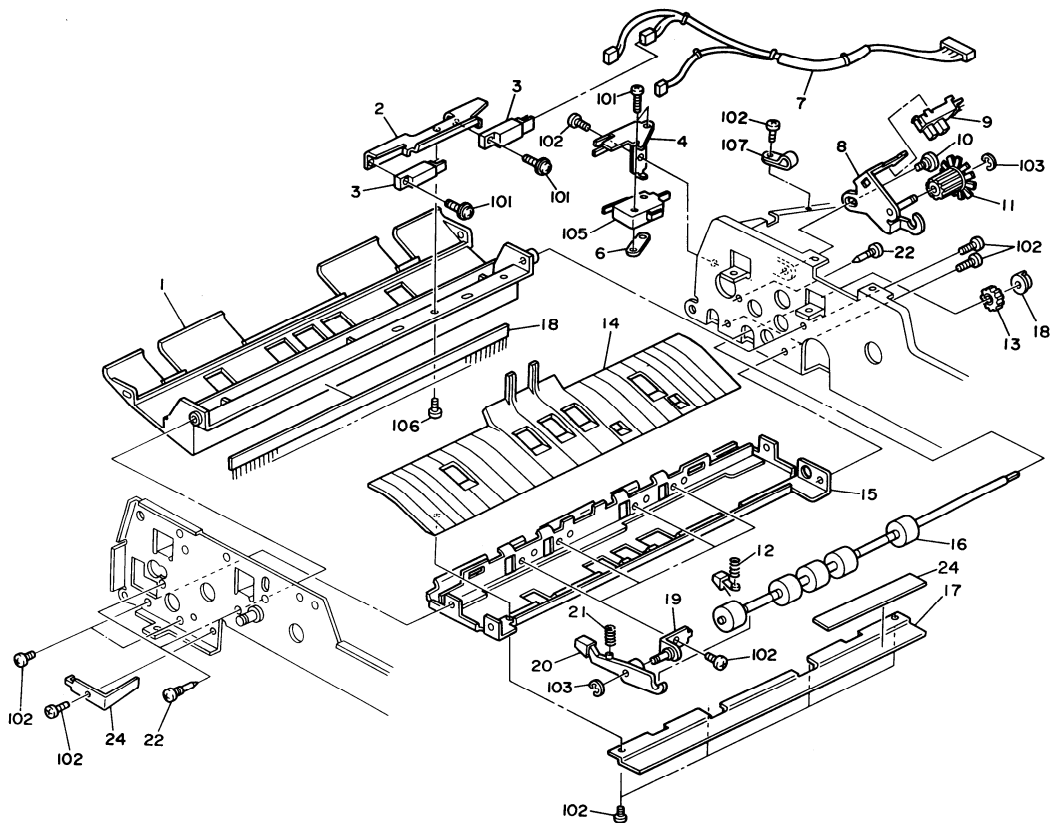


3. SEPARATION SECTION (A378)

Index No.	Part No.	Description	Q'ty Per Assembly
1	A499 1111	Left Cover	1
2	A499 1153	Grouding Plate	1
3	A499 1126	Separation Guide	1
4	A499 1120	Separation Belt Holder	1
5	A499 1326	Holder - Original Stopper Bracket	1
6	AB01 0049	Gear - 31Z	1
7	5446 2824	Screw - Duplex Guide Plate	5
8	A499 1331	Stopper Solenoid Bracket	1
9	A028 5876	Original Stopper Solenoid	2
10	A499 1332	Stopper Solenoid Lever	1
11	5415 4145	Stud	2
12	5403 1910	Spring Anchor - Stopper Lever	2
13	A499 5703	Harness - Original Sensor	1
14	A499 1123	Left Cover Bracket	1
15	A499 1317	Guide Seal	2
16	AA16 1022	Cushion	1
17	A499 1335	Stopper	1
18	A499 1305	Original Entrance Guide	1
19	A010 5700	Sensor	2
20	A499 1315	Original Sensor Bracket	1
21	H006 2171	Stepped Screw	1
22	A499 1325	Stud - M4x5	1
23	A378 1127	Rear Separation Guide	1
24	A499 1336	Stopper Positioning Plate	1
25	AA06 0277	Release Spring	1
26	A499 1321	Original Stopper Bracket	1
27	A499 1312	Separation Guide Bracket	1
28	A499 1313	Paper Guide Mylar	1
29	A499 1323	Original Stopper	1
30	AA06 0278	Release Spring	2
31	A499 1341	Release Lever - Separation Unit	1
32	A499 1346	Knob - Release Lever	1
33	A499 9500	Separation Belt - 3Pcs/Set	3
34	AB01 0050	Gear - 32Z	1
35	A499 1131	Tension Roller Holder	3

Index No.	Part No.	Description	Q'ty Per Assembly
36	A499 1135	Tension Roller	3
37	A499 1129	Shaft - Tensionroller Holder	1
38	AA06 0276	Spring	3
39	AF02 0167	Drive Roller Separation Belt	1
40	A422 1078	Bushing - 6x12x4mm	11
41	A499 1122	Shaft Holder	1
42	5447 2681	Snap Ring	1
101	0313 0040W	Philips Pan Head Screw - M3x4	
102	0313 0060M	Philips Pan Head Screw - M3x6	
103	0313 0060W	Philips Pan Head Screw - M3x6	
104	0314 0060W	Philips Pan Head Screw - M4x6	
105	0623 0100E	Spring Pin - 3x10mm	
106	0632 0080E	Spring Pin -2 x 8mm	
107	0720 0030E	Retaining Ring - M3	
108	0720 0040E	Retaining Ring - M4	
109	0951 4008W	Philips Screw With Flat Washer-M4x8	
110	0951 3006W	Philips Screw With Fiat Washer-M3x6	
111	0951 4006W	Philips Screw With Flat Washer-M4x6	
112	0965 4006W	Tapping Screw - M4 x 6	
113	0741 3506	Bali Bearing - 6x12x4 mm	

4. FEED-OUT SECTION (A378)



4. FEED-OUT SECTION (A378)

Index No.	Part No.	Description	Q'ty Per Assembly
1	A499 1272	Upper Feed Out Guide	1
2	A499 1274	Register Sensor Bracket	1
3	AW01 0025	Photosensor ON2530	4
4	A499 3142	Switch Bracket - Separation	1
5	A499 1379	Sensor Pad	1
6	5056 0509	Nut Plate - Microswitch	2
7	A499 5702	Registration Sensor Harness	1
8	A499 1371	Pulse Generator Bracket	1
9	5216 5245	Photointerruptor - IL-G-3P-S3T2-E	3
10	A499 1378	Stepped Screw - M4x6	1
11	A499 1375	Pulse Generator	1
12	AA06 3151	Inner Pressure Spring	2
13	AB01 0051	Gear - 26Z	1
14	A499 1358	Lower Feedout Guide	1
15	A499 1351	Original Feed Out Stay	1
16	A378 1355	Idle Roller	1
17	A499 1356	Sensor Pad Plate	1
18	5875 2067	Bushing	1
19	A499 1361	Bracket - Idle Roller Arm	4
20	A499 1365	Idle Roller Arm	4
21	AA06 3152	Outer Pressure Spring	2
22	5446 2824	Screw - Duplex Guide Plate	5
23	A499 1275	Grouding Plate	1
24	A499 1379	Sensor Pad	1

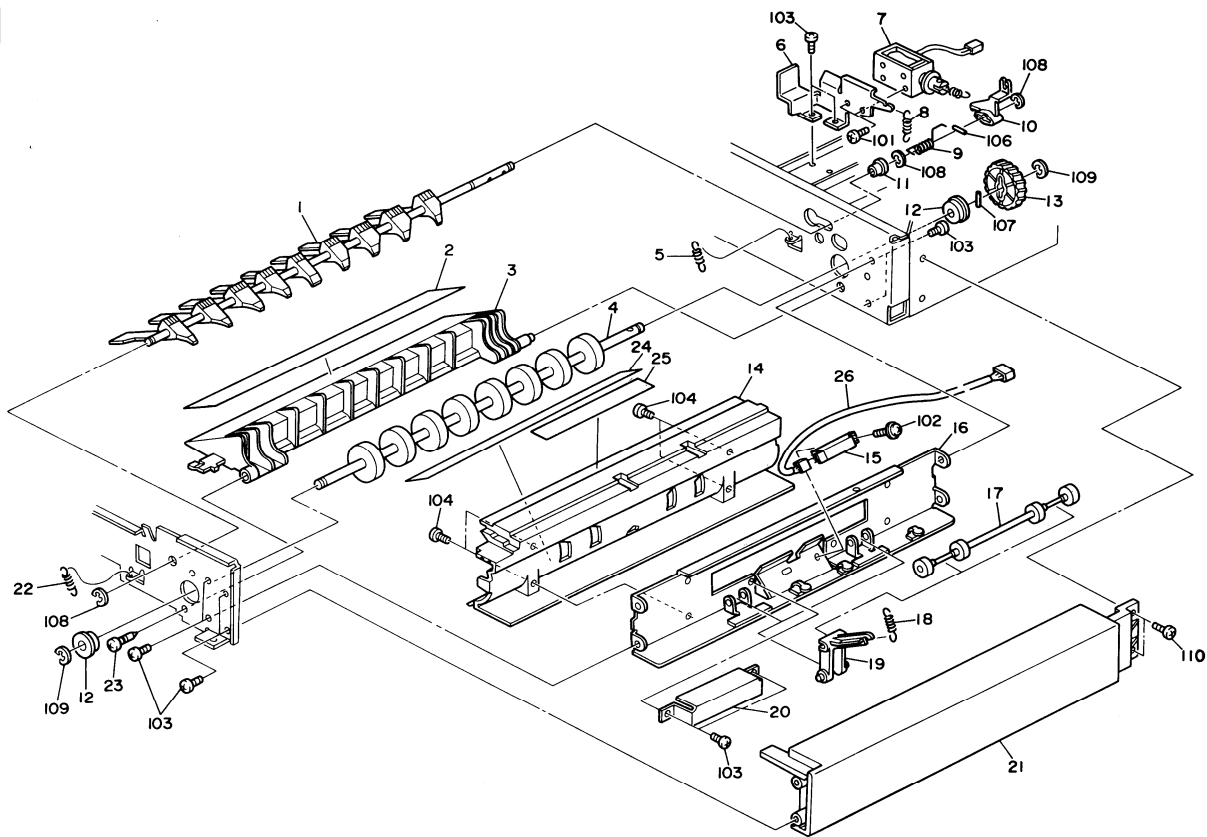
Index No.	Part No.	Description	Q'ty Per Assembly
101	0313 0160B	Phillips Pan Head Screw - M3x16	
102	0951 4006W	Phillips Screw With Flat Washer-M4x6	
103	0720 0030E	Retaining Ring - M3	
104	0807 4111	Washer - 5.2x14x0.1 mm	
105	1204 1123	Microswitch	
106	0951 3010W	Phillipscrew With Flat Washer-M3x10	
107	1105 0008	Nylon Clip - 2n	

5. TRANSPORT SECTION (A378)

Index No.	Part No.	Description	Q'ty Per Assembly
1	A497 1125	Transport Belt	1
2	A378 1562	Drive Roller	1
3	AF02 0163	Belt Pressure Roller	1
4	A499 5707	Grounding Wire	1
5	A499 1616	Bushing - 4m	8
6	A499 1531	Left Stay	1
7	A499 1581	Support Plate - Release Bracket	1
8	A499 1545	Belt Unit Arm	2
9	AA06 3153	Pressure Spring	4
10	A499 1552	Bushing - 6m	1
11	A499 1511	Front Frame - Transport Belt	1
12	AF02 3001	Belt Support Roller	4
13	A378 1537	Belt Guide - Rear Left	1
14	A499 1532	Middle Stay	2
15	AA14 3062	Shoulder Screw - M4	2
16	A499 1520	Rear Frame - Transport Belt	1
17	A499 1536	Belt Guide - Front Left	1
18	A378 1555	Pulley -21Z	1
19	A422 1078	Bushing - 6x12x4mm	11
20	A499 1542	Belt Unit Hinge	2
21	A499 1556	Pin - 4x16	2
22	A499 1576	Right Belt Guide	1
23	A499 1571	Tension Plate	2
24	A499 1551	Bushing - 6m	3
25	A378 1563	Drive Roller	1
26	A378 1561	Belt Release Bracket	1
27	AA06 0286	Tension Spring	2
28	AA12 0032	Antistatic Brush	5
29	A499 1513	Front Pressure Plate	2
30	A499 1523	Rear Pressure Plate	2
31	A378 1577	Right Belt Guide	1
32	A378 1566	Tension Plate	1

Index No.	Part No.	Description	Q'ty Per Assembly
101	0314 0060W	Philips Pan Head Screw - M4x6	
102	0344 0060F	Philips Truss Head Screw - M4x6	
103	0632 0100E	Pin - M2x10	
104	0720 0030E	Retaining Ring - M3	
105	0720 0040E	Retaining Ring - M4	
106	0741 3506	Ball Bearing - 6x12x4 mm	
107	0574 0040E	Hexagon Headless Set Screw - M4x4	

6. INVERTOR SECTION (A378)

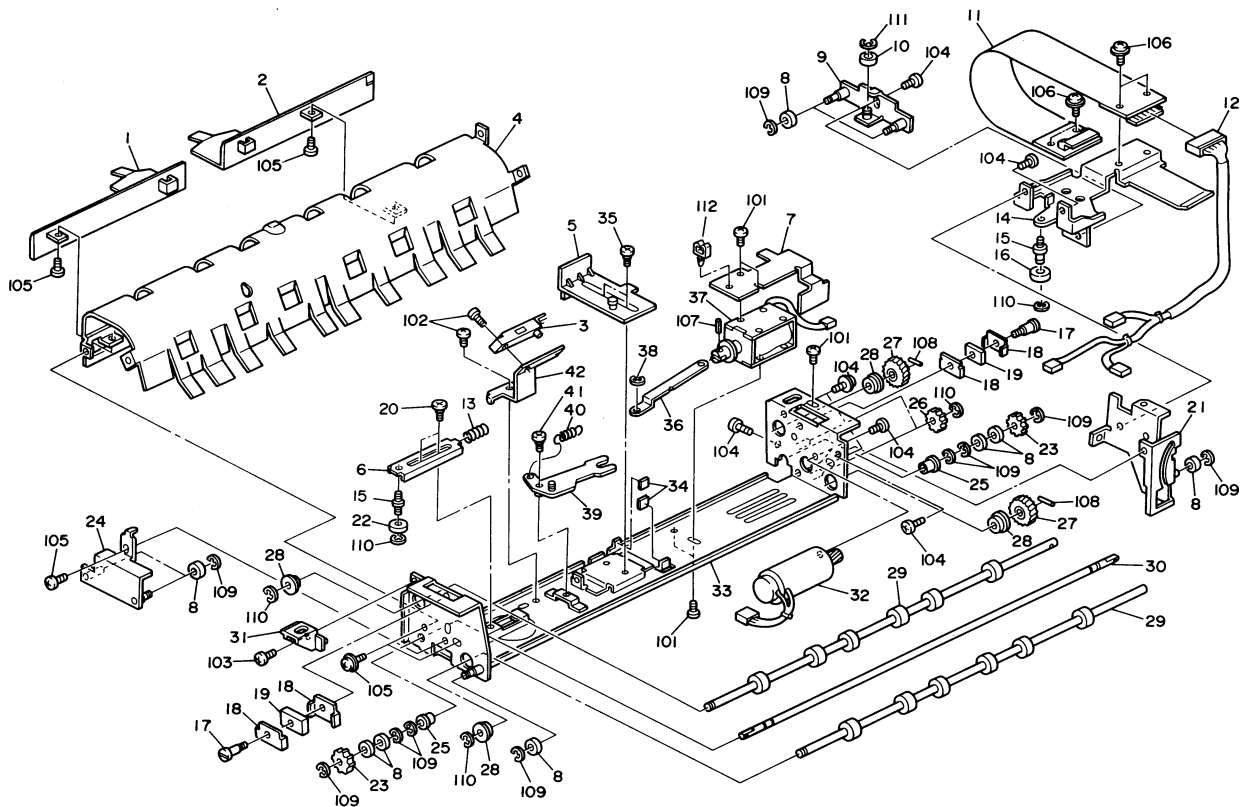


6. INVERTER SECTION (A378)

Index No.	Part No.	Description	Q'ty Per Assembly
1	A499 1751	Invertorpawls	1
2	A499 1712	Paper Guide Mylar	1
3	A499 1711	Invertor Guide Plate	1
4	AF02 0164	Invertor Roller	1
5	AA06 0280	Spring - Invertor Guide	1
6	A378 1761	Inverter Solenoid Bracket	1
7	A028 5876	Original Stopper Solenoid	2
8	AA06 0287	Spring - Invertor Lever	1
9	AA06 6054	Spring	1
10	A378 1752	Inverter Pawls	1
11	H014 3107	Bushing - M5	1
12	A422 1079	Bushing - 8x16x5mm	2
13	AB01 1098	Gear - 35Z	1
14	A499 1721	Invertor Guide	2
15	AW01 0025	Photosensor ON2530	4
16	A499 1735	Invertor Stay	1
17	AF02 2046	Idle Roller	1
18	AA06 0282	Pressure Spring	2
19	A499 1731	Idle Roller Arm	2
20	A499 1738	Invertor Sensor Cover	1
21	A378 3551	Right Cover	1
22	AA06 0343	Spring - Front Inverter Guide	1
23	5446 2824	Screw - Duplex Guide Plate	5
24	A378 1729	Paper Guide Mylar	1
25	A499 1746	Mylar - 128x18	1
26	A499 5708	Harness - Invertor Sensor	1
27	AA06 0283	Spring - Invertor Solenoid	1

Index No.	Part No.	Description	Q'ty Per Assembly
101	0313 0040W	Philips Pan Head Screw - M3x4	
102	0313 0160B	Philips Pan Head Screw - M3x16	
103	0314 0060W	Philips Pan Head Screw - M4x6	
104	0354 0080W	Philips Pan Head Screw - M4x8	
105	0623 0100E	Spring Pin - 3x10mm	
106	0632 0100E	Pin - M2x10	
107	0632 0140E	Parallel Pin - M2x14	
108	0720 0040E	Retaining Ring - M4	
109	0720 0060E	Retaining Ring - M6	
110	0354 0060D	Sunk Screw - 4x6	

7. EXIT SECTION 1 (A378)

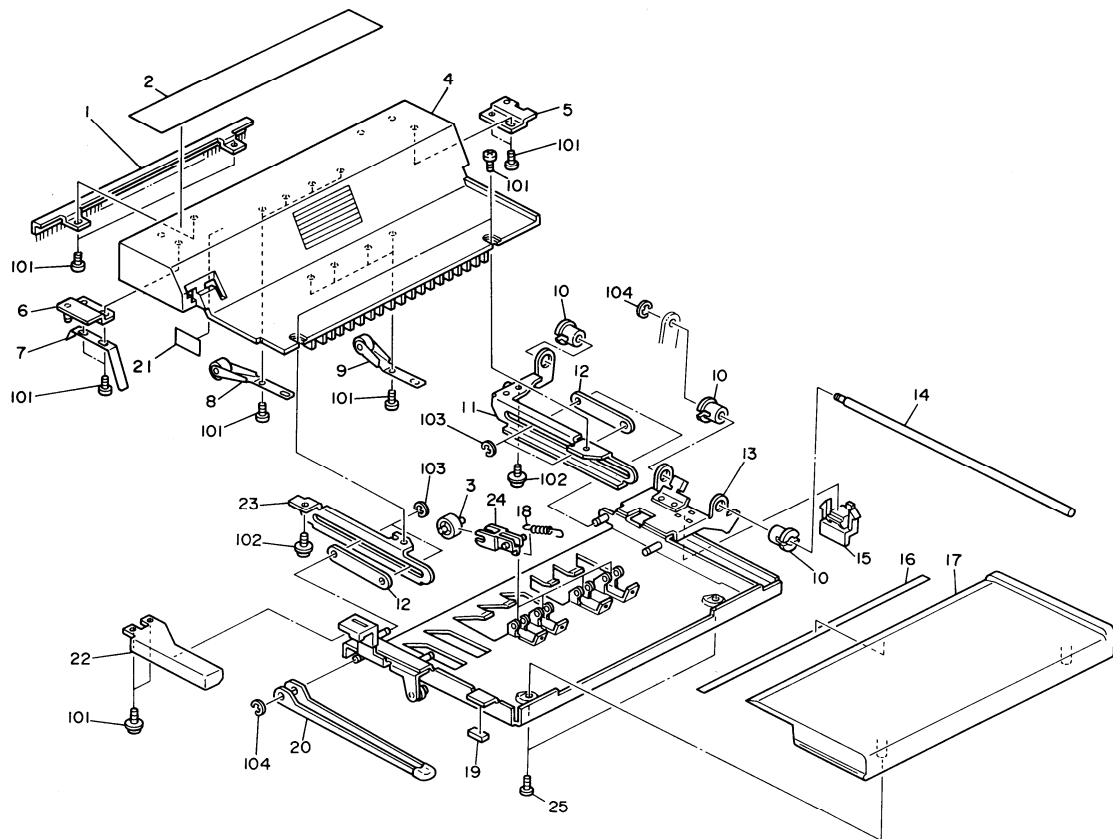


7. EXIT SECTION 1 (A378)

Index No.	Part No.	Description	Q'ty Per Assembly
1	A499 2201	Front End Fence	1
2	A499 2211	Rear End Fence	1
3	AW01 0025	Photosensor ON2530	4
4	A499 2198	Invertor Guide Plate	1
5	A499 2131	Edn Fence - Center	1
6	A499 2121	Slider Lock	1
7	A499 2246	Harness Cover	1
8	A499 2181	Fixing Roller	10
9	A499 2161	Rear Fixing Plate	1
10	A454 1172	Collar - M6	1
11	A499 5501	Stapler Harness - 1	1
12	A499 5704	Exit Harness	1
13	AA06 3154	Spring - Lock	1
14	A378 2166	Harness Bracket	1
15	AA14 3282	Stud - M4	2
16	A378 2184	Locking Roller	1
17	AA14 3284	Stepped Screw - M3x11	2
18	A499 2177	Magnet Holder	4
19	A499 2176	Exit Cover Magnet	2
20	AA14 0060	Stepped Screw - M3x5	2
21	A378 2155	Guide Bracket	1
22	A499 2184	Locking Roller	1
23	A499 2189	Gear - 28Z	2
24	A499 2151	Front Fixing Plate	1
25	AA08 0004	Bushing - 4x6x5	2
26	A378 2133	Gear - 30Z	2
27	A378 2132	Gear - 31Z	2
28	A422 1078	Bushing - 6x12x4mm	11
29	AF02 0165	Exit Roller	2
30	A499 2191	Slider Pinion Shaft	1
31	A499 2241	Positioning Holder	1
32	A409 1234	Exit Motor - DC 9W	1
33	A378 2111	Exit Frame	1
34	A378 2131	Cushion	2
35	H006 2171	Stepped Screw	1

Index No.	Part No.	Description	Q'ty Per Assembly
36	A499 2141	End Fence Link	1
37	A499 5451	Push Plate Solenoid	1
38	AA14 3284	Stepped Screw - M3x11	2
39	A499 2142	End Fence Lever	1
40	AA06 0284	Spring - Pick-up	1
41	AA14 0065	Stepped Screw - M3x6	1
42	A499 2146	Exit Screw Bracket	1
101	0313 0040W	Philips Pan Head Screw - M3x4	
102	0313 0060W	Philips Pan Head Screw - M3x6	
103	0313 0160W	Philips Pan Head Screw - M3x16	
104	0314 0040W	Philips Pan Head Screw - M4x4	
105	0314 0060W	Philips Pan Head Screw - M4x6	
106	0344 0060W	Philips Truss Head Screw - M4x6	
107	0623 0100E	Spring Pin - 3x10mm	
108	0632 0120E	Spring Pin -2 x 12mm	
109	0720 0025E	Retaining Ring - M2.5	
110	0720 0030E	Retaining Ring - M3	
111	0720 0040E	Retaining Ring - M4	
112	1105 0319	Harness Clamp	

8. EXIT SECTION 2 (A378)

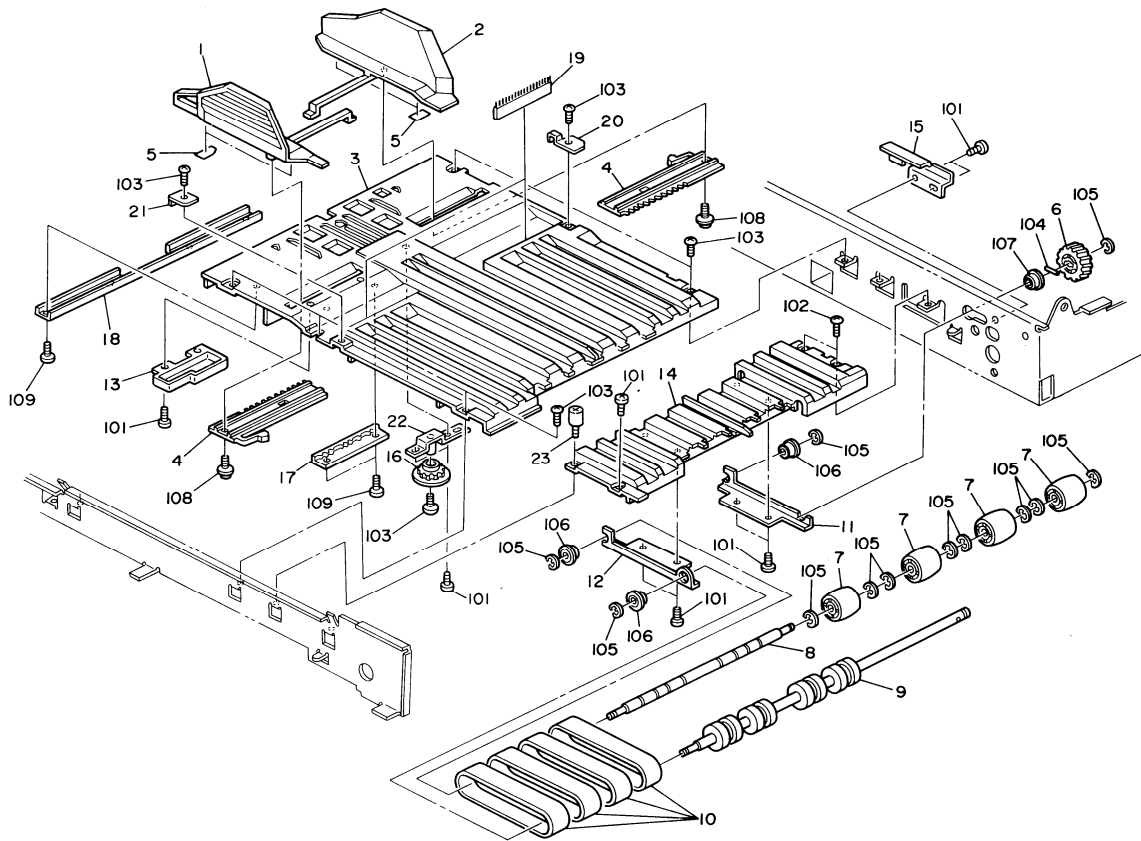


8. EXIT SECTION 2 (A378)

Index No.	Part No.	Description	Q'ty Per Assembly
1	A499 2338	Antistatic Brash Plate	1
2	A378 6050	Decal - Original Set	1
3	A499 2444	Middle Belt Roller	4
4	A378 2301	Slider Cover	1
5	A499 2317	Rear Positioning Plate	1
6	A499 2313	Front Positioning Plate	1
7	A499 2341	Exit Grouding Plate	1
8	A499 2328	Exit Guide Roller - Left	4
9	A499 2323	Exit Guide Roller - Right	4
10	A378 2377	Bushing	3
11	A378 2331	Rear Slide Plate	1
12	A378 2388	Front Spacer	2
13	A378 2351	Middle Giode Plate	1
14	A378 2378	Slide Guide Shaft	1
15	A378 2392	Rear Spacer	1
16	A499 3606	seal	1
17	A378 3571	Right Slide Cover	1
18	AA06 0259	Spring - Middle Roller	4
19	5215 3072	Side Magnet	1
20	A378 2371	Slide Lock Arm	1
21	A499 2639	Exit Sensor Seal - 20 x 13	1
22	A499 3651	Slider Grip	1
23	A378 2346	Plate	1
24	A499 2445	Holder - Middle Belt Roller	4
25	5875 2088	Shoulder Screw - M4	4

Index No.	Part No.	Description	Q'ty Per Assembly
101	0314 0060W	Philips Pan Head Screw - M4x6	
102	0951 4006W	Philips Screw With Flat Washer-M4x6	
103	0720 0030E	Retaining Ring - M3	
104	0720 0040E	Retaining Ring - M4	

9. ORIGINAL TABLE (A378)

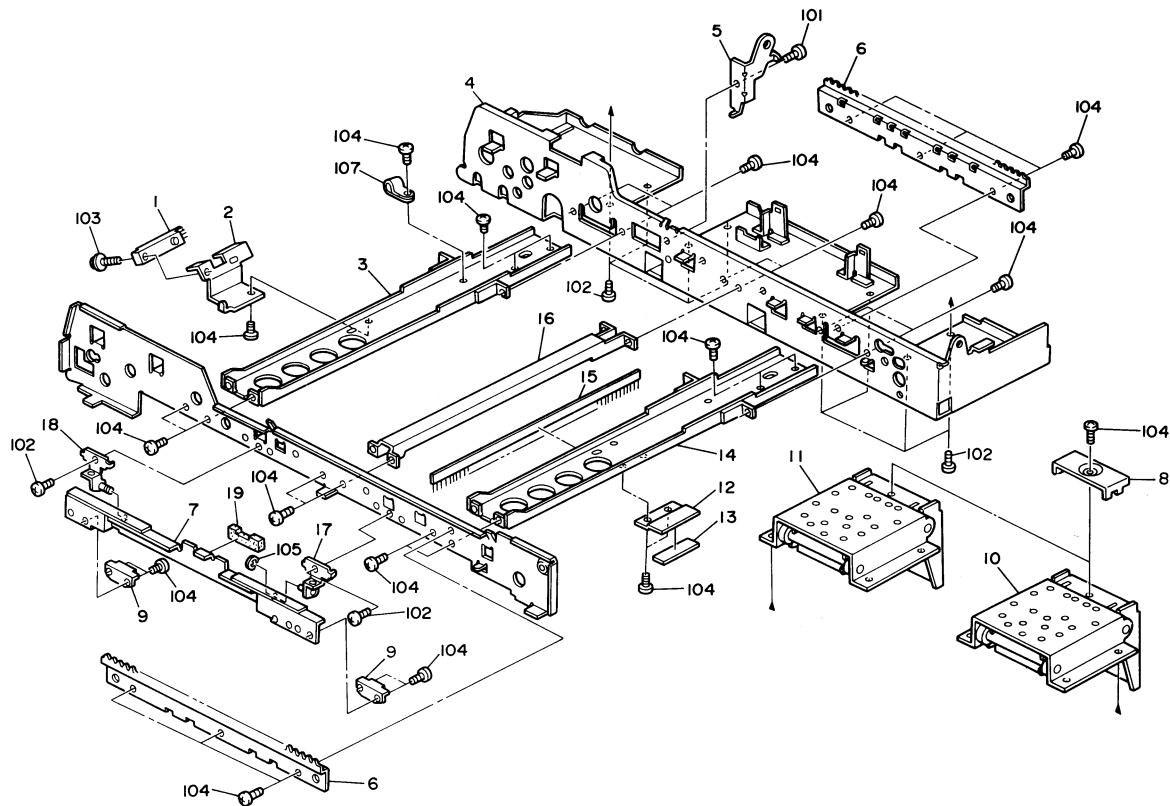


9. ORIGINAL TABLE (A378)

Index No.	Part No.	Description	Qty Per Assembly
1	A499 1476	Front Side Fence	1
2	A499 1486	Rear Side Fence	1
3	A378 1406	Original Table	1
4	A499 1237	Side Fence Gear	2
5	A499 1246	Guide Seal - 1X8X16mm	4
6	AB01 1099	Gear - 20Z	1
7	A499 2427	Idle Roller	4
8	A499 2426	Idle Roller Shaft	1
9	AF02 0166	Belt Drive Roller - Right Table	1
10	A499 9501	Transport Belt-Right Table-4Pcs/Set	4
11	A499 2422	Rear Stay - Right Table	1
12	A499 2421	Front Stay - Right Table	1
13	A499 1242	Original Table Cap	1
14	A378 2416	Right Table	1
15	A378 2195	Rear Stopper	1
16	A499 1239	Gear - 20Z	1
17	A499 1268	Side Fence Guide Rail	1
18	A499 1236	Original Table Support Plate	1
19	AA12 0045	Antistatic Brush	2
20	A499 1278	Front Grounding Plate	1
21	A499 1279	Rear Grounding Plate	1
22	A499 1247	Side Fence Guide Bracket	1
23	A378 3611	Stopper Screw	1

Index No.	Part No.	Description	Qty Per Assembly
101	0314 0060W	Philips Pan Head Screw - M4x6	
102	0344 0060F	Philips Truss Head Screw - M4x6	
103	0344 0060W	Philips Truss Head Screw - M4x6	
104	0632 0120E	Spring Pin -2 x 12mm	
105	0720 0040E	Retaining Ring - M4	
106	0741 3505	Ball Bearing - 5x10X4	
107	0741 3506	Ball Bearing - 6x12x4 mm	
108	0951 3006W	Philips Screw With Flat Washer-M3x6	
109	0951 4006W	Philips Screw With Flat Washer-M4x6	

10. FRAME SECTION (A378)

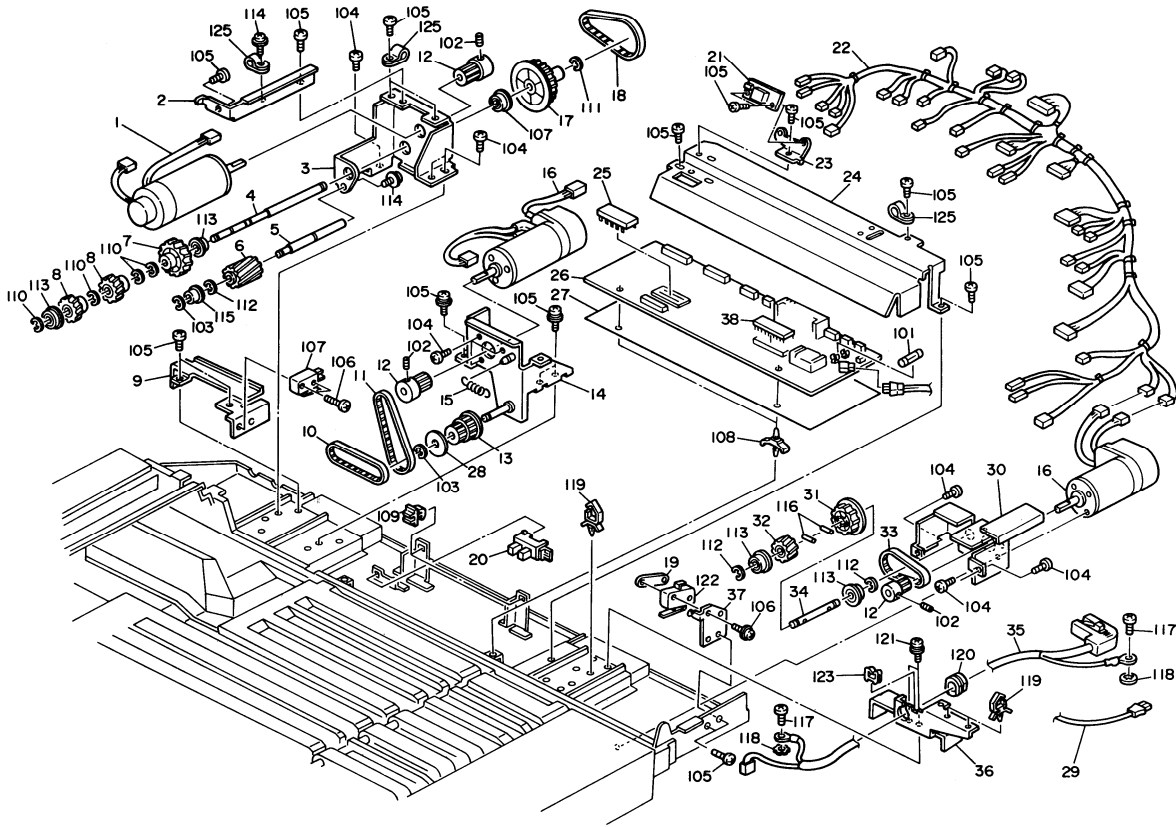


10. FRAME SECTION (A378)

Index No.	Part No.	Description	Q'ty Per Assembly
1	A010 5700	Sensor	2
2	A499 1277	Original Set Sensor Bracket	1
3	A499 3135	Right Stay	2
4	A378 3121	Rear Side Plate	1
5	A378 2387	Left Hinge	1
6	A499 2194	Slider Rack	2
7	A499 3635	Magnet Catch Stay	1
8	A499 4125	Hinge Stopper	2
9	5936 2480	Magnet Catch Ass'y	2
10	A499 3186	Right Hinge	1
11	A499 3171	Left Hinge	1
12	A499 1771	Stopper Plate	1
13	A499 1772	Cushion - 44x10X3	1
14	A499 3135	Right Stay	2
15	AA12 0032	Antistatic Brush	5
16	A499 1245	Table Support Bracket	1
17	A499 3616	Right Magnet Catch Hinge	1
18	A499 3611	Left Magnet Catch Hinge	1
19	A499 3631	Cushion - Magnet Catch	1

Index No.	Part No.	Description	Q'ty Per Assembly
101	0313 0040W	Philips Pan Head Screw - M3x4	
102	0313 0060W	Philips Pan Head Screw - M3x6	
103	0313 0160B	Philips Pan Head Screw - M3x16	
104	0314 0060W	Philips Pan Head Screw - M4x6	
105	0720 0025E	Retaining Ring - M2.5	
106	0720 0030E	Retaining Ring - M3	
107	1105 0062	Nylon Clip - 6N	

11. ELECTRICAL SECTION (A378)



11. ELECTRICAL SECTION (A378)

Index No.	Part No.	Description	Q'ty Per Assembly
1	AX06 0091	DC Motor-DC19W	1
2	A499 1451	Motor Support Bracket	1
3	A378 1422	Feed Motor Bracket	1
4	A499 1433	Shaft - Roller Clutch -220	1
5	A499 1434	Idle Gear Shaft	1
6	A378 1089	Gear - 15Z	1
7	A378 1092	Gear - 30Z	1
8	A378 1093	Gear - 18Z	2
9	A499 3152	Switch Bracket	1
10	A378 1836	Timing Belt - 234XL	1
11	A378 1837	Timing Belt - 144XL	1
12	A378 1095	Pulley - 18Z	3
13	A378 1831	Pulley - 30Z/16Z	1
14	A378 1821	Transport Motor Bracket	1
15	A378 1839	Spring	1
16	AX06 0039	DC Motor- DC24V 19W	2
17	A378 1087	Pulley - 62Z	1
18	A378 1086	Timing Belt 160XL	1
19	5056 0509	Nut Plate - Microswitch	2
20	5216 5245	Photointerruptor - IL-G-3P-S3T2-E	1
21	A499 5551	Indication Board	1
22	A378 5700	Main Harness	1
23	A378 3165	Indicator Bracket	1
24	A499 3156	Main Board Cover	1
25	A378 5810	IC - AM27C256-150DC	1
26	A378 5500	Main Control Board	1
27	A499 3167	Board Protect Sheet	1
28	A378 1833	Flange - 5Z	1
29	AW03 0032	Optical Fiber	1
30	A378 1851	Inverter Motor Bracket	1
31	A378 1856	Pulley - 45Z	1
32	A378 1857	Gear - 24Z	1
33	A378 1859	Timing Belt - 130XL	1
34	A378 1858	Reverse Roller Drive Shaft	1
35	A376 5755	Interface Harness	1

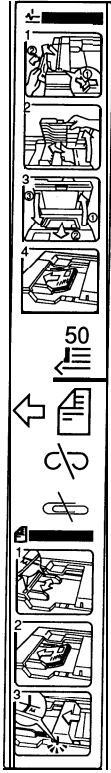
Index No.	Part No.	Description	Q'ty Per Assembly
36	A378 3161	Right Support Bracket	1
37	A378 3145	Safety Switch Bracket	1
38	A422 5350	IC - HCTL-3	1
101	1607 0076	Fuse - 3A	
102	0574 0040E	Hexagon Headless Set Screw - M4x4	
103	0720 0030E	Retaining Ring - M3	
104	0313 0040W	Phillips Pan Head Screw - M3x4	
105	0314 0060W	Phillips Pan Head Screw - M4x6	
106	0313 0160W	Phillips Pan Head Screw - M3x16	
107	1204 2188	Interlock Switch	
108	1105 0326	Locking Support	
109	1105 0192	Locking Support	
110	0720 0050E	Retaining Ring - M5	
111	0720 0070E	Retaining Ring - M7	
112	0720 0040E	Retaining Ring - M4	
113	0741 3506	Ball Bearing - 6x12x4 mm	
114	0951 3006W	Phillips Screw With Flat Washer-M3x6	
115	0805 3291	Ball Bearing - 8x16x5mm	
116	0632 0100E	Pin - M2x10	
117	0314 0080M	Phillips Pan Head Screw - M4x8	
118	0704 0040C	Toothed Washer- M4	
119	1105 0310	Wire Clamp	
120	1106 0289	Bushing - SR-5N-1	
121	0957 4008B	Phillips Screw W/F Washer-M4x8	
122	1204 1433	MicroSwitch	
123	1105 0328	Harness Clamp - ES-0505	
124	1105 0319	Harness Clamp	
125	1105 0008	Nylon Clip - 2N	

12. DECAL AND DOCUMENT (A378)

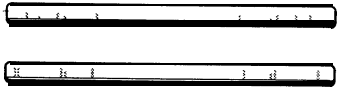
1




2



3



12. DECAL AND DOCUMENT (A378)

Index No.	Part No.	Description	Qty Per Assembly
1	A378 6016	Decal - EXIT	1
2	A378 6050	Decal - Original Set	1
3	A499 6012	Decal - Side Fence - LT	1
3	A499 6013	Decal - Side Fence - A4	1
			

Index No.	Part No.	Description	Qty Per Assembly

PARTS INDEX

Part No.	Description	Page and Index No.
A378 1084	Timing Belt - 192XL	5- 5
A378 1086	Timing Belt 160XL	23- 18
A378 1087	Pulley - 62Z	23- 17
A378 1089	Gear - 15Z	23- 6
A378 1091	Gear - 32Z	5- 9
A378 1092	Gear - 30Z	23- 7
A378 1093	Gear - 18Z	23- 8
A378 1094	Gear - 19Z/22Z	5- 7
A378 1095	Pulley - 18Z	5-21
A378 1095	Pulley - 18Z	23- 12
A378 1096	Pulley - 24Z	5-20
A378 1127	Rear Separation Guide	7-23
A378 1211	Separation Roller	5- 2
A378 1221	Separation Clutch	5- 4
A378 1355	Idle Roller	9- 16
A378 1406	Original Table	19- 3
A378 1422	Feed Motor Bracket	23- 3
A378 1467	Sensor Bracket	5- 11
A378 1537	Belt Guide - Rear Left	11- 13
A378 1555	Pulley - 21Z	11- 18
A378 1561	Belt Release Bracket	11-26
A378 1562	Drive Roller	11- 2
A378 1563	Drive Roller	11-25
A378 1566	Tension Plate	11-32
A378 1577	Right Belt Guide	11-31
A378 1729	Paper Guide Mylar	13-24
A378 1752	Inverter Pawls	13- 10
A378 1761	Inverter Solenoid Bracket	13- 6
A378 1821	Transport Motor Bracket	23- 14
A378 1831	Pulley - 30Z/16Z	23- 13
A378 1833	Flange - 5Z	23-28
A378 1836	Timing Belt - 234XL	23- 10
A378 1837	Timing Belt - 144XL	23- 11
A378 1839	Spring	23- 15
A378 1851	Inverter Motor Bracket	23-30

Part No.	Description	Page and Index No.
A378 1856	Pulley - 45Z	23-31
A378 1857	Gear - 24Z	23-32
A378 1858	Reverse Roller Drive Shaft	23-34
A378 1859	Timing Belt - 130XL	23-33
A378 2111	Exit Frame	15-33
A378 2131	Cushion	15-34
A378 2132	Gear - 31Z	15-27
A378 2133	Gear - 30Z	15- 26
A378 2155	Guide Bracket	15-21
A378 2166	Harness Bracket	15- 14
A378 2184	Locking Roller	15- 16
A378 2195	Rear Stopper	19- 15
A378 2301	Slider Cover	17- 4
A378 2331	Rear Slide Plate	17- 11
A378 2346	Plate	17- 23
A378 2351	Middle Guide Plate	17- 13
A378 2371	Slide Lock Arm	17-20
A378 2377	Bushing	17- 10
A378 2378	Slide Guide Shaft	17- 14
A378 2387	Left Hinge	21- 5
A378 2388	Front Spacer	17- 12
A378 2392	Rear Spacer	17- 15
A378 2416	Right Table	19- 14
A378 3121	Rear Side Plate	21- 4
A378 3133	seal	5-24
A378 3145	Safety Switch Bracket	23-37
A378 3148	Switch Actuator	3- 8
A378 3161	Right Support Bracket	23-36
A378 3165	indicator Bracket	23-23
A378 3511	Rear Cover	3- 4
A378 3516	Lower Rear Cover	3- 5
A378 3541	Front Cover	3- 11
A378 3551	Right Cover	13-21
A378 3571	Right Slide Cover	17- 17
A378 3591	Slide Support Cover	3- 7

Part No.	Description	Page and Index No.
A378 3593	Spring	3- 12
A378 3611	Stopper Screw	19-23
A378 4111	Sholder Screw - M5	3- 14
A378 4112	Sholder Screw M5	3- 6
A378 4114	Sholder Screw - M4	3- 15
A378 4116	Switch Actuator	3- 13
A378 5500	Main Control Board	23-26
A378 5700	Main Harness	23-22
A378 5810	IC - AM27C256-150DC	23-25
A378 6016	Decal - Exit	3- 10
A378 6016	Decal - Exit	25- 1
A378 6050	Decal - Original Set	17- 2
A378 6050	Decal - Original Set	25- 2

Part No.	Description	Page and Index No.
AA06 0259	Spring - Middle Roller	17- 18
AA06 0276	Spring	7-38
AA06 0277	Release Spring	7-25
AA06 0278	Release Spring	7-30
AA06 0279	Pressure Spring	5- 16
AA06 0280	Spring - Invertor Guide	13- 5
AA06 0282	Pressure Spring	13- 18
AA06 0283	Spring - Invertor Solenoid	13-27
AA06 0284	Spring - Pick-up	15-40
AA06 0286	Tension Spring	11-27
AA06 0287	Spring - Invertor Lever	13- 8
AA06 0343	Spring - Front Invertor Guide	13-22
AA06 3151	Inner Pressure Spring	9- 12
AA06 3152	Outer Pressure Spring	9-21
AA06 3153	Pressure Spring	11- 9
AA06 3154	Spring - Lock	15- 13
AA06 6054	Spring	13- 9
AA08 0004	Bushing - 4x6x5	15-25
AA12 0032	Antistatic Brush	11-28
AA12 0032	Antistatic Brush	21- 15
AA12 0045	Antistatic Brush	19- 19
AA14 0060	Stepped Screw - M3x5	15-20
AA14 0065	Stepped Screw - M3x6	15-41
AA14 3062	Shoulder Screw - M4	11- 15
AA14 3282	Stud - M4	15- 15
AA14 3284	Stepped Screw - M3x11	15- 17
AA14 3284	Stepped Screw - M3x11	15-38
AA16 1022	Cushion	7- 16
AB01 0049	Gear - 31Z	7- 6
AB01 0050	Gear - 32Z	7-34
AB01 0051	Gear - 26Z	9- 13
AB01 1086	Gear - 20Z	5- 6
AB01 1098	Gear - 35Z	13- 13
AB01 1099	Gear - 20Z	19- 6
AF02 0161	Feed-out Roller	5- 3

Part No.	Description	Page and Index No.
AF02 0163	Belt Pressure Roller	11- 3
AF02 0164	Invertor Roller	13- 4
AF02 0165	Exit Rdler	15-29
AF02 0166	Belt Drive Roller- Right Table	19- 9
AF02 0167	Drive Roller Separation Belt	7-39
AF02 2046	Idle Roller	13- 17
AF02 3001	Belt Support Roller	11- 12
AF02 3002	1st Pick-up Roller	5- 15
AF02 3003	2nd Pick-up Roller	5-23
AW01 0025	Photosensor ON2530	9- 3
AW01 0025	Photosensor ON2530	13- 15
AW01 0025	Photosensor ON2530	15- 3
AW03 0032	Optical Fiber	23-29
AX06 0039	DCMotor-DC24V 19W	23- 16
AX06 0091	DCMotor-DC19W	23- 1
A010 05700	Sensor	7- 19
A010 5700	Sensor	21- 1
A028 5876	Original Stopper Solenoid	7- 9
A028 5876	Original Stopper Solenoid	13- 7
A376 5755	Interface Harness	23-35
A409 1234	Exit Motor - DC 9W	15-32
A422 1078	Bushing - 6x12x4mm	5- 10
A422 1078	Bushing - 6x12x4mm	7-40
A422 1078	Bushing - 6x12x4mm	11- 19
A422 1078	Bushing - 6x12x4mm	15-28
A422 1079	Bushing - 8x16x5mm	13- 12
A422 5350	IC - HCTL-3	23-38
A454 1172	Collar - M6	15- 10
A497 1125	Transport Belt	11- 1
A499 1111	Left Cover	7- 1
A499 1120	Separation Belt Holder	7- 4
A499 1122	Shaft Holder	7-41
A499 1123	Left Cover Bracket	7- 14
A499 1126	Separation Guide	7- 3
A499 1129	Shaft - Tensionroller Holder	7-37

Part No.	Description	Page and Index No.
A499 1131	Tension Roller Holder	7-35
A499 1135	Tension Roller	7-36
A499 1153	Grounding Plate	7- 2
A499 1212	Guide Roller	5- 1
A499 1215	Separation Drive Shaft	5- 19
A499 1224	Inner Separation Guide	5- 8
A499 1236	Original Table Support Plate	19- 18
A499 1237	Side Fence Gear	19- 4
A499 1239	Gear - 20Z	19- 16
A499 1242	Original Table Cap	19- 13
A499 1245	Table Support Bracket	21- 16
A499 1246	Guide Seal - 1x8x16mm	19- 5
A499 1247	Side Fence Guide Bracket	19-22
A499 1268	Side Fence Guide Rail	19- 17
A499 1272	Upper Feed Out Guide	9- 1
A499 1274	Register Sensor Bracket	9- 2
A499 1275	Grounding Plate	9-23
A499 1277	Original Set Sensor Bracket	21- 2
A499 1278	Front Grounding Plate	19-20
A499 1279	Rear Grounding Plate	19-21
A499 1305	Original Entrance Guide	7- 18
A499 1312	Separation Guide Bracket	7-27
A499 1313	Paper Guide Mylar	7-28
A499 1315	Original Sensor Bracket	7-20
A499 1317	Guide Seal	7- 15
A499 1321	Original Stopper Bracket	7-26
A499 1323	Original Stopper	7-29
A499 1325	Stud - M4x5	7-22
A499 1326	Holder - Original Stopper Bracket	7- 5
A499 1331	Stopper Solenoid Bracket	7- 8
A499 1332	Stopper Solenoid Lever	7- 10
A499 1335	Stopper	7- 17
A499 1336	Stopper Positioning Plate	7-24
A499 1341	Release Lever - Separation Unit	7-31
A499 1346	Knob - Release Lever	7-32

Part No.	Description	Page and Index No.
A499 1351	Original Feed Out Stay	9- 15
A499 1356	Sensor Pad Plate	9- 17
A499 1358	Lower Feedout Guide	9- 14
A499 1361	Bracket - Idle Roller Arm	9- 19
A499 1365	Idle Roller Arm	9-20
A499 1371	Pulse Generator Bracket	9 - 8
A499 1375	Pulse Generator	9- 11
A499 1378	Stepped Screw - M4x6	9- 10
A499 1379	Sensor Pad	9- 5
A499 1379	Sensor Pad	9-24
A499 1433	Shaft - Roller Clutch -220	23- 4
A499 1434	Idle Gear Shaft	23- 5
A499 1451	Motor Support Bracket	23- 2
A499 1458	Pick-up Roller Cam	5- 18
A499 1461	Cam Lever	5- 14
A499 1465	Bushing - 5m	5- 13
A499 1476	Front Side Fence	19- 1
A499 1486	Rear Side Fence	19- 2
A499 1511	Front Frame - Transport Belt	11- 11
A499 1513	Front Pressure Plate	11-29
A499 1520	Rear Frame - Transport Belt	11- 16
A499 1523	Rear Pressure Plate	11-30
A499 1531	Left Stay	11- 6
A499 1532	Middle Stay	11- 14
A499 1536	Belt Guide - Front Left	11- 17
A499 1542	Belt Unit Hinge	11-20
A499 1545	Belt Unit Arm	11- 8
A499 1551	Bushing - 6m	11-24
A499 1552	Bushing - 6m	11- 10
A499 1556	Pin - 4x16	11-21
A499 1571	Tension Plate	11-23
A499 1576	Right Belt Guide	11-22
A499 1581	Support Plate - Release Bracket	11- 7
A499 1616	Bushing - 4m	11- 5
A499 1711	Invertor Guide Plate	13- 3

Part No.	Description	Page and Index No.
A499 1712	Paper Guide Mylar	13- 2
A499 1721	Invertor Guide	13- 14
A499 1731	Idle Roller Arm	13- 19
A499 1735	Invertor Stay	13- 16
A499 1738	Invertor Sensor Cover	13-20
A499 1746	Mylar - 128x18	13-25
A499 1751	Invertorpawls	13- 1
A499 1771	Stopper Plate	21- 12
A499 1772	Cushion - 44x10X3	21- 13
A499 2121	Slider Lock	15- 6
A499 2131	Edn Fence - Center	15- 5
A499 2141	End Fence Link	15-36
A499 2142	End Fence Lever	15-39
A499 2146	Exit Screw Bracket	15-42
A499 2151	Front Fixing Plate	15-24
A499 2161	Rear Fixing Plate	15- 9
A499 2176	Exit Cover Magnet	15- 19
A499 2177	Magnet Holder	15- 18
A499 2181	Fixing Roller	15- 8
A499 2184	Locking Roller	15-22
A499 2189	Gear -282	15-23
A499 2191	Slider Pinion Shaft	15-30
A499 2194	Slider Rack	21- 6
A499 2198	Invertor Guide Plate	15- 4
A499 2201	Front End Fence	15- 1
A499 2211	Rear End Fence	15- 2
A499 2241	Positioning Holder	15-31
A499 2246	Harness Cover	15- 7
A499 2313	Front Positioning Plate	17- 6
A499 2317	Rear Positioning Plate	17- 5
A499 2323	Exit Guide Roller - Right	17- 9
A499 2328	Exit Guide Roller- Left	17- 8
A499 2338	Antistatic Brush Plate	17- 1
A499 2341	Exit Grouding Plate	17- 7
A499 2421	Front Stay - Right Table	19- 12

Part No.	Description	Page and Index No.
A499 2422	Rear Stay - Right Table	19- 11
A499 2426	Idle Roller Shaft	19- 8
A499 2427	Idle Roller	19- 7
A499 2444	Middle Belt Roller	17- 3
A499 2445	Holder - Middle Belt Roller	17-24
A499 2639	Exit Sensor Seal - 20 x 13	17-21
A499 3135	Right Stay	21- 3
A499 3135	Right Stay	21- 14
A499 3142	Switch Bracket - Separation	9- 4
A499 3152	Switch Bracket	23- 9
A499 3156	Main Board Cover	23-24
A499 3167	Board Protect Sheet	23-27
A499 3171	Left Hinge	21- 11
A499 3186	Right Hinge	21- 10
A499 3531	Indication Panel	3- 3
A499 3561	Right Upper Cover	3- 2
A499 3606	seal	17- 16
A499 3611	Left Magnet Catch Hinge	21- 18
A499 3616	Right Magnet Catch Hinge	21- 17
A499 3621	Grip - Magnet Catch	3- 9
A499 3631	Cushion - Magnet Catch	21- 19
A499 3635	Magnet Catch Stay	21- 7
A499 3651	Slider Grip	17- 22
A499 4125	Hinge Stopper	21- 8
A499 5451	Push Plate Solenoid	15-37
A499 5501	Stapler Harness -1	15- 11
A499 5551	Indication Board	23-21
A499 5702	Registration Sensor Harness	9- 7
A499 5703	Harness - Original Sensor	7- 13
A499 5704	Exit Harness	15- 12
A499 5707	Grounding Wire	11- 4
A499 5708	Harness - Invertor Sensor	13-26
A499 6012	Decal - Side Fence - LT	3- 1
A499 6012	Decal - Side Fence - LT	25- 3
A499 6013	Decal - Side Fence - A4	3- 1

Part No.	Description	Page and Index No.
A499 6013	Decal - Side Fence - A4	25- 3
A499 9500	Separation Belt - 3Pcs/Set	7-33
A499 9501	Transport Belt-Right Table-4Pcs/Set	19- 10
H006 2171	Stepped Screw	7-21
H006 2171	Stepped Screw	15-35
H014 3107	Bushing - M5	13- 11
5056 0509	Nut Plate - Microswitch	9- 6
5056 0509	Nut Plate - Microswitch	23- 19
5215 3072	Side Magnet	17- 19
5216 5245	Photointerruptor - IL-G-3P-S3T2-E	5- 12
5216 5245	Photointerruptor - IL-G-3P-S3T2-E	9- 9
5216 5245	Photointerruptor - IL-G-3P-S3T2-E	23-20
5403 1910	Spring Anchor - Stopper Lever	7- 12
5415 4145	stud	7- 11
5446 2824	Screw - Duplex Guide Plate	7- 7
5446 2824	Screw - Duplex Guide Plate	9-22
5446 2824	Screw - Duplex Guide Plate	13-23
5447 2681	Snap Ring	7-42
5875 2067	Bushing	9- 18
5875 2088	Shoulder Screw - M4	17-25
5936 1145	Position Encoder	5- 17
5936 2480	Magnet Catch Ass'y	21- 9

Part No.	Description	Page and Index No.
0313 0040W	Philips Pan Head Screw - M3x4	7-101
0313 0040W	Philips Pan Head Screw - M3x4	13-101
0313 0040W	Philips Pan Head Screw - M3x4	15-101
0313 0040W	Philips Pan Head Screw - M3x4	21-101
0313 0040W	Philips Pan Head Screw - M3x4	23-104
0313 0060M	Philips Pan Head Screw - M3x6	7-102
0313 0060W	Philips Pan Head Screw - M3x6	7-103
0313 0060W	Philips Pan Head Screw - M3x6	15-102
0313 0060W	Philips Pan Head Screw - M3x6	21-102
0313 0160B	Philips Pan Head Screw - M3x16	9-101
0313 0160B	Philips Pan Head Screw - M3x16	13-102
0313 0160B	Philips Pan Head Screw - M3x16	21-103
0313 0160W	Philips Pan Head Screw - M3x16	15-103
0313 0160W	Philips Pan Head Screw - M3x16	23-106
0314 0040W	Philips Pan Head Screw - M4x4	15-104
0314 0060W	Philips Pan Head Screw - M4x6	3-101
0314 0060W	Philips Pan Head Screw - M4x6	5-101
0314 0060W	Philips Pan Head Screw - M4x6	7-104
0314 0060W	Philips Pan Head Screw - M4x6	11-101
0314 0060W	Philips Pan Head Screw - M4x6	13-103
0314 0060W	Philips Pan Head Screw - M4x6	15-105
0314 0060W	Philips Pan Head Screw - M4x6	17-101
0314 0060W	Philips Pan Head Screw - M4x6	19-101
0314 0060W	Philips Pan Head Screw - M4x6	21-104
0314 0060W	Philips Pan Head Screw - M4x6	23-105
0314 0080M	Philips Pan Head Screw - M4x8	3-102
0314 0080M	Philips Pan Head Screw - M4x8	23-117
0344 0060F	Philips Truss Head Screw - M4x6	11-102
0344 0060F	Philips Truss Head Screw - M4x6	19-102
0344 0060W	Philips Truss Head Screw - M4x6	15-106
0344 0060W	Philips Truss Head Screw - M4x6	19-103
0354 0060D	Sunk Screw - 4x6	3-103
0354 0060D	Sunk Screw - 4x6	13-110
0354 0080W	Philips Pan Head Screw - M4x8	13-104
0574 0040E	Hexagon Headless Set Screw - M4x4	5-102

Part No.	Description	Page and Index No.
0574 0040E	Hexagon Headless Set Screw - M4x4	11-107
0574 0040E	Hexagon Headless Set Screw - M4x4	23-102
0623 0100E	Spring Pin - 3x10mm	7-105
0623 0100E	Spring Pin - 3x10mm	13-105
0623 0100E	Spring Pin - 3x10mm	15-107
0632 0080E	Spring Pin -2 x 8mm	7-106
0632 0100E	Pin - M2x10	5-103
0632 0100E	Pin - M2x10	11-103
0632 0100E	Pin - M2x10	13-106
0632 0100E	Pin - M2x10	23-116
0632 0120E	Spring Pin -2 x 12mm	15-108
0632 0120E	Spring Pin -2 x 12mm	19-104
0632 0140E	Parallel Pin - M2x14	5-105
0632 0140E	Parallel Pin - M2x14	13-107
0704 0040C	Toothed Washer- M4	23-118
0720 0025E	Retaining Ring - M2.5	15-109
0720 0025E	Retaining Ring - M2.5	21-105
0720 0030E	Retaining Ring - M3	7-107
0720 0030E	Retaining Ring - M3	9-103
0720 0030E	Retaining Ring - M3	11-104
0720 0030E	Retaining Ring - M3	15-110
0720 0030E	Retaining Ring - M3	17-103
0720 0030E	Retaining Ring - M3	21-106
0720 0030E	Retaining Ring - M3	23-103
0720 0040E	Retaining Ring - M4	3-104
0720 0040E	Retaining Ring - M4	5-106
0720 0040E	Retaining Ring - M4	7-108
0720 0040E	Retaining Ring - M4	11-105
0720 0040E	Retaining Ring - M4	13-108
0720 0040E	Retaining Ring - M4	15-111
0720 0040E	Retaining Ring - M4	17-104
0720 0040E	Retaining Ring - M4	19-105
0720 0040E	Retaining Ring - M4	23-112
0720 0050E	Retaining Ring - M5	23-110
0720 0060E	Retaining Ring - M6	5-108

Part No.	Description	Page and Index No.
0720 0060E	Retaining Ring - M6	13-109
0720 0070E	Retaining Ring - M7	5-109
0720 0070E	Retaining Ring - M7	23-111
0741 3505	Ball Bearing - 5x10X4	19-106
0741 3506	Ball Bearing - 6x12x4 mm	5-110
0741 3506	Ball Bearing - 6x12x4 mm	7-113
0741 3506	Ball Bearing-6x12x4 mm	11-106
0741 3506	Ball Bearing-6x12x4 mm	19-107
0741 3506	Ball Bearing-6x12x4 mm	23-113
0805 3291	Ball Bearing-8x16x5mm	5-104
0805 3291	Ball Bearing - 8x16x5mm	23-115
0807 4111	Washer - 5.2x14x0.1 mm	9-104
0951 3006W	Philips Screw With Flat Washer-M3x6	7-110
0951 3006W	Philips Screw With Flat Washer-M3x6	19-108
0951 3006W	Philips Screw With Flat Washer-M3x6	23-114
0951 3010W	Philips Screw With Flat Washer-M3x10	9-106
0951 4006W	Philips Screw With Flat Washer-M4x6	7-111
0951 4006W	Philips Screw With Flat Washer-M4x6	9-102
0951 4006W	Philips Screw With Flat Washer-M4x6	17-102
0951 4006W	Philips Screw With Flat Washer-M4x6	19-109
0951 4008W	Philips Screw With Flat Washer-M4x8	7-109
0957 4008B	Philips Screw W/F Washer-M4x8	23-121
0965 4006W	Tapping Screw - M4 x 6	7-112
1105 0008	Nylon Clip - 2n	9-107
1105 0008	Nylon Clip - 2N	23-125
1105 0062	Nylon Clip - 6N	21-107
1105 0192	Locking Support	23-109
1105 0310	Wire Clamp	23-119
1105 0319	Harness Clamp	15-112
1105 0319	Harness Clamp	23-124
1105 0326	Locking Support	23-108
1105 0328	Harness Clamp - ES-0505	23-123
1106 0289	Bushing - SR-5N-1	23-120
1204 1123	Microswitch	9-105
1204 1433	Microswitch	23-122

Part No.	Description	Page and Index No.
1204 2188	Interlock Switch	23-107
1607 0076	Fuse - 3A	23-101